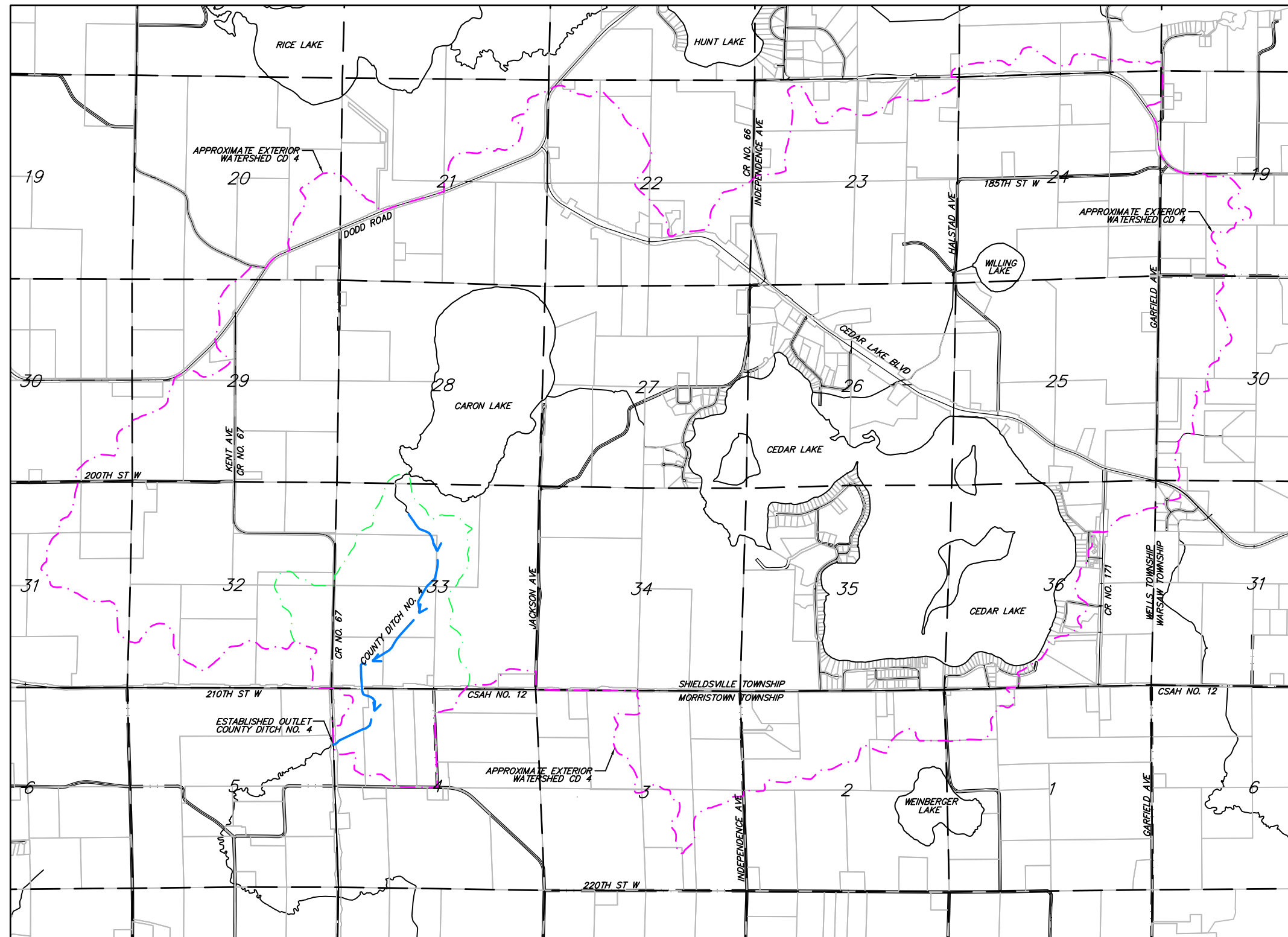


COUNTY DITCH NO. 4 REDETERMINATION OF BENEFITS & DAMAGES RICE COUNTY, MINNESOTA

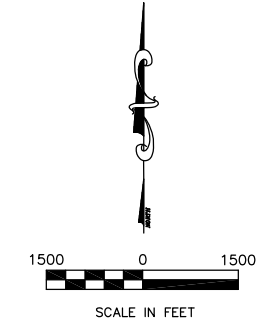


INDEX TO SHEETS

SHEET	SUBJECT
1	TITLE SHEET
2-5	WATERSHED MAP

LEGEND

APPROXIMATE EXTERIOR WATERSHED	---
APPROXIMATE INTERIOR WATERSHED	---
LEGAL OPEN DITCH (Project)	---
LEGAL OPEN DITCH (Not Project)	---
LEGAL WATERWAY (Project)	---
PRIVATE OPEN DITCH	---
LEGAL TILE DITCH (Project)	---
LEGAL TILE DITCH (Not Project)	---
PRIVATE TILE	---
NATURAL STREAM	---
GAS LINE	---
OVERHEAD ELECTRIC	---
TELEPHONE	---
FENCE LINE	---



No responsibility is accepted for the locations of utilities shown hereon. Verification of actual locations should be requested prior to the commencement of construction or the taking of any other action relying on the actual locations.

Locations of all utilities shown are approximate.
 GOPHER STATE ONE-CALL: 1-800-252-1166

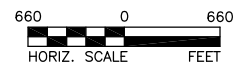
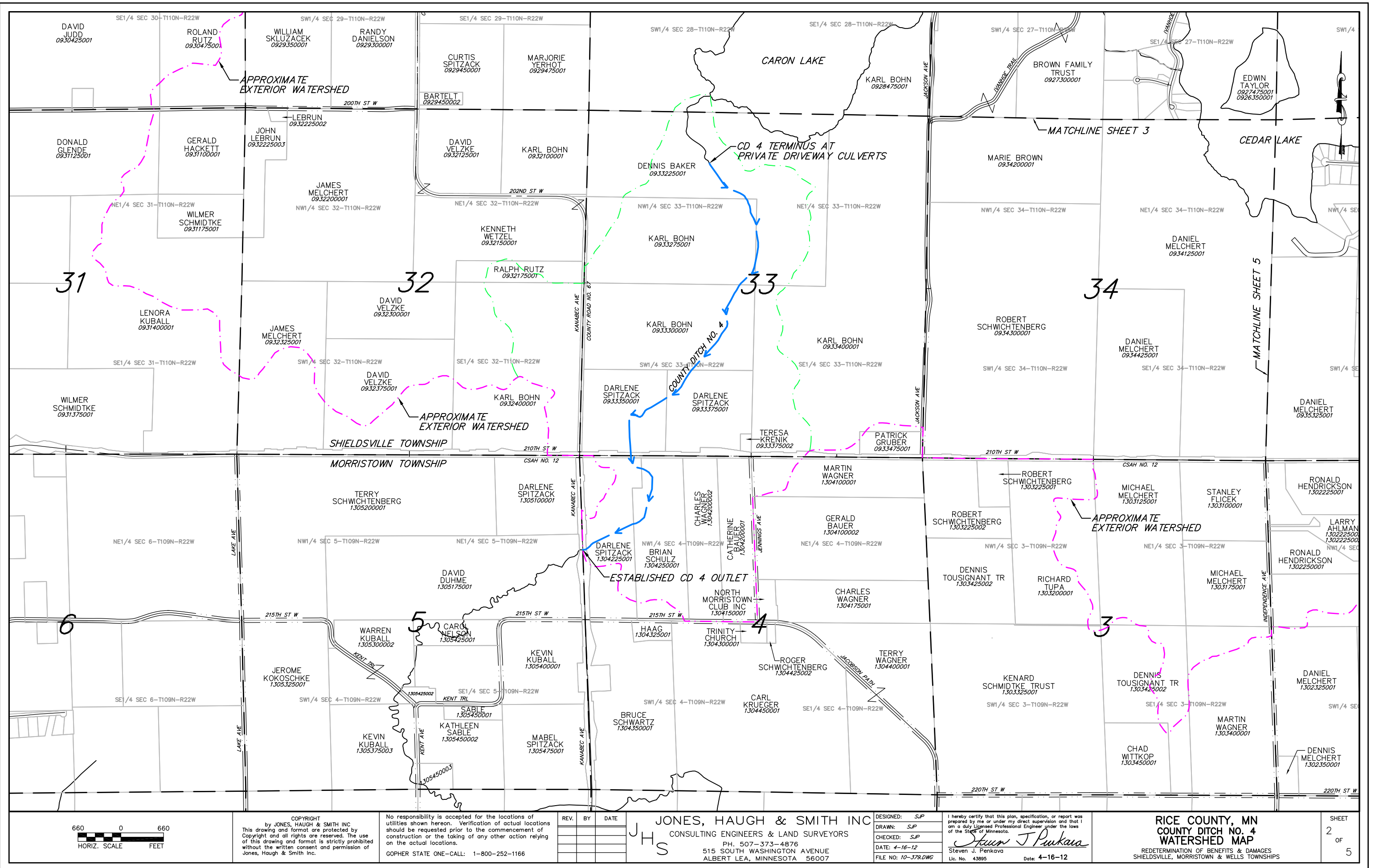
COPYRIGHT
 by JONES, HAUGH & SMITH INC
 This drawing and format are protected by Copyright and all rights are reserved. The use of this drawing and format is strictly prohibited without the written consent and permission of Jones, Haugh & Smith Inc.

I hereby certify that this plan, specification, or report was prepared by me or under my direct supervision and that I am a duly Licensed Professional Engineer under the laws of the State of Minnesota.

Steven J. Penkava
 Steven J. Penkava
 Lic. No. 43895 Date: 4-16-12

REV.	BY	DATE		JONES, HAUGH & SMITH INC CONSULTING ENGINEERS & LAND SURVEYORS PH. 507-373-4876 515 SOUTH WASHINGTON AVENUE ALBERT LEA, MINNESOTA 56007

DESIGNED: SJP	EXHIBIT A RICE COUNTY, MN COUNTY DITCH NO. 4 REDETERMINATION OF BENEFITS & DAMAGES TITLE SHEET	DRAWN: SJP	SHEET 1 OF 5
CHECKED: SJP		CHECKED: SJP	
DATE: 4-16-12		FILE NO: 10-379.DWG	



COPYRIGHT
 by JONES, HAUGH & SMITH INC
 This drawing and format are protected by
 Copyright and all rights are reserved. The use
 of this drawing and format is strictly prohibited
 without the written consent and permission of
 Jones, Haugh & Smith Inc.

No responsibility is accepted for the locations of
 utilities shown hereon. Verification of actual locations
 should be requested prior to the commencement of
 construction or the taking of any other action relying
 on the actual locations.
 GOPHER STATE ONE—CALL: 1-800-252-1166

REV.	BY	DATE

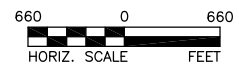
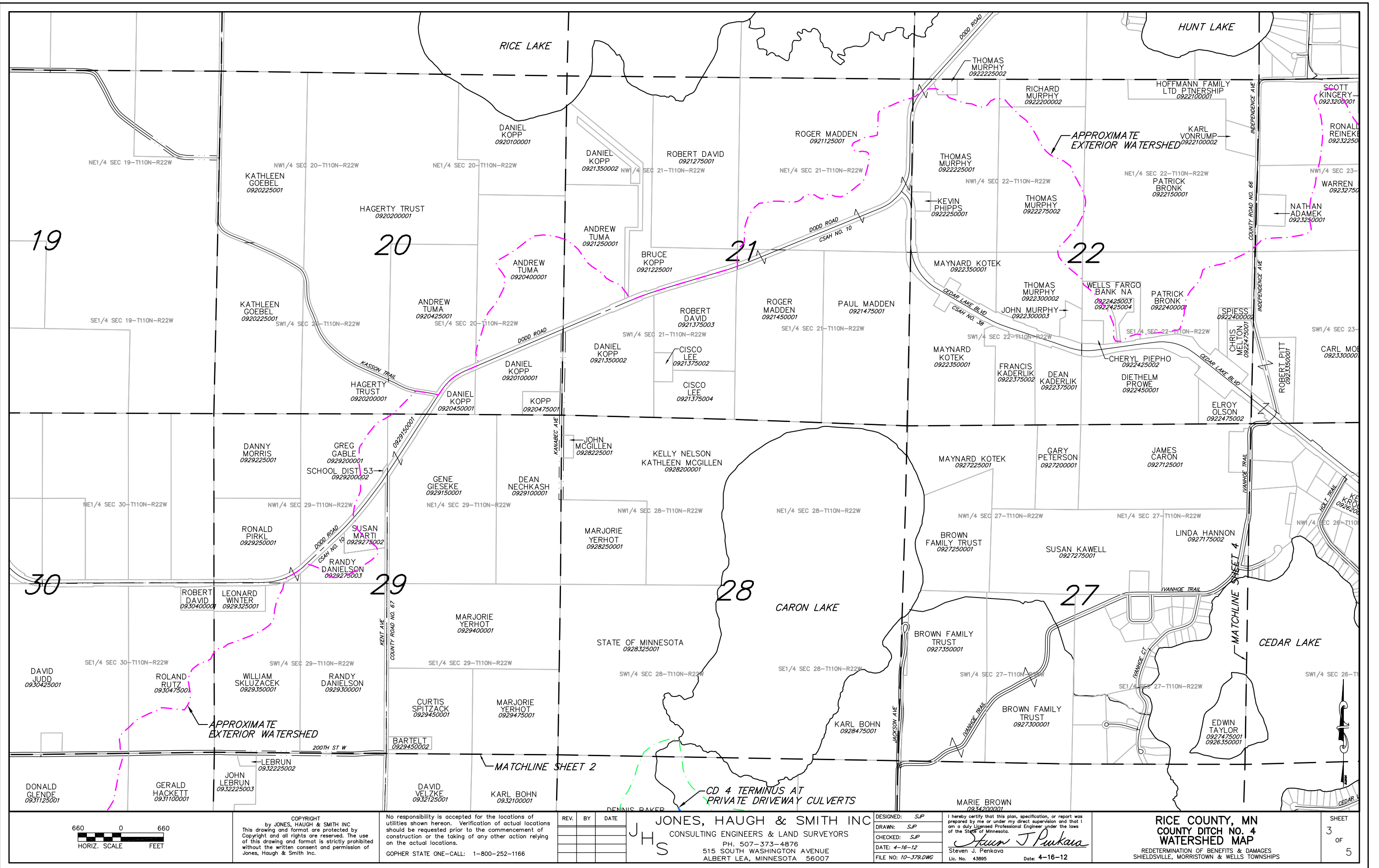
JONES, HAUGH & SMITH INC
 CONSULTING ENGINEERS & LAND SURVEYORS
 PH. 507-373-4876
 515 SOUTH WASHINGTON AVENUE
 ALBERT LEA, MINNESOTA 56007

DESIGNED: SJP
 DRAWN: SJP
 CHECKED: SJP
 DATE: 4-16-12
 FILE NO: 10-379.DWG

I hereby certify that this plan, specification, or report was
 prepared by me or under my direct supervision and that I
 am a duly Licensed Professional Engineer under the laws
 of the State of Minnesota.
Steven J. Penkava
 Steven J. Penkava
 Lic. No. 43895 Date: 4-16-12

RICE COUNTY, MN
COUNTY DITCH NO. 4
WATERSHED MAP
 REDETERMINATION OF BENEFITS & DAMAGES
 SHIELDSVILLE, MORRISTOWN & WELLS TOWNSHIPS

SHEET
 2
 OF
 5



COPYRIGHT
 by JONES, HAUGH & SMITH INC
 This drawing and format are protected by
 Copyright and all rights are reserved. The use
 of this drawing and format is strictly prohibited
 without the written consent and permission of
 Jones, Haugh & Smith Inc.

No responsibility is accepted for the locations of
 utilities shown hereon. Verification of actual locations
 should be requested prior to the commencement of
 construction or the taking of any other action relying
 on the actual locations.
 GOPHER STATE ONE-CALL: 1-800-252-1166

REV.	BY	DATE

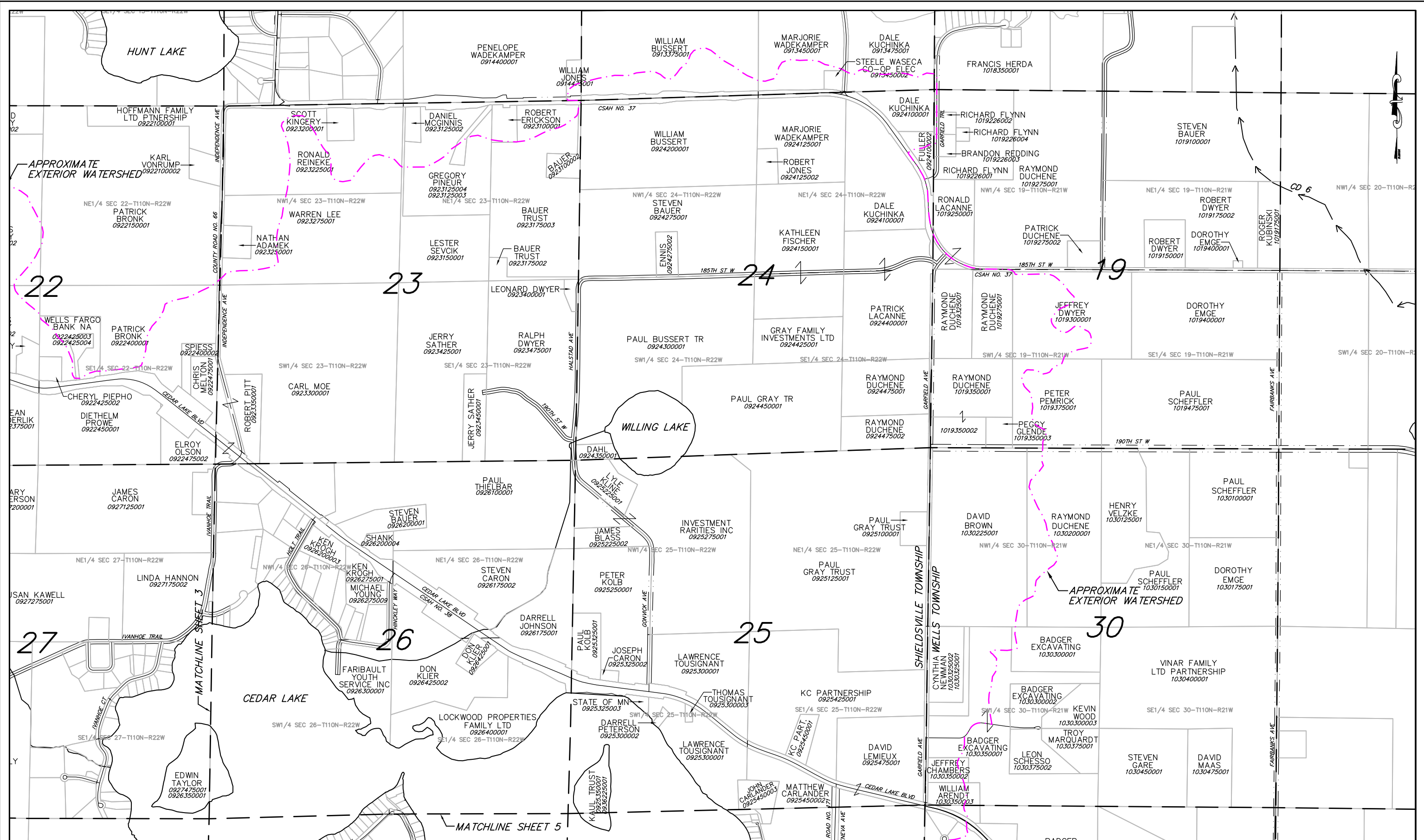
JONES, HAUGH & SMITH INC
 CONSULTING ENGINEERS & LAND SURVEYORS
 PH. 507-373-4876
 515 SOUTH WASHINGTON AVENUE
 ALBERT LEA, MINNESOTA 56007

DESIGNED: SJP
 DRAWN: SJP
 CHECKED: SJP
 DATE: 4-16-12
 FILE NO: 10-379.DWG

I hereby certify that this plan, specification, or report was
 prepared by me or under my direct supervision and that I
 am a duly Licensed Professional Engineer under the laws
 of the State of Minnesota.
Steven J. Penkava
 Steven J. Penkava
 Lic. No. 43895 Date: 4-16-12

RICE COUNTY, MN
COUNTY DITCH NO. 4
WATERSHED MAP
 REDETERMINATION OF BENEFITS & DAMAGES
 SHIELDSVILLE, MORRISTOWN & WELLS TOWNSHIPS

SHEET
 3
 OF
 5



COPYRIGHT
 by JONES, HAUGH & SMITH INC.
 This drawing and format are protected by
 Copyright and all rights are reserved. The use
 of this drawing and format is strictly prohibited
 without the written consent and permission of
 Jones, Haugh & Smith Inc.

No responsibility is accepted for the locations of
 utilities shown hereon. Verification of actual locations
 should be requested prior to the commencement of
 construction or the taking of any other action relying
 on the actual locations.
 GOPHER STATE ONE—CALL: 1-800-252-1166

REV.	BY	DATE

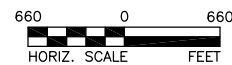
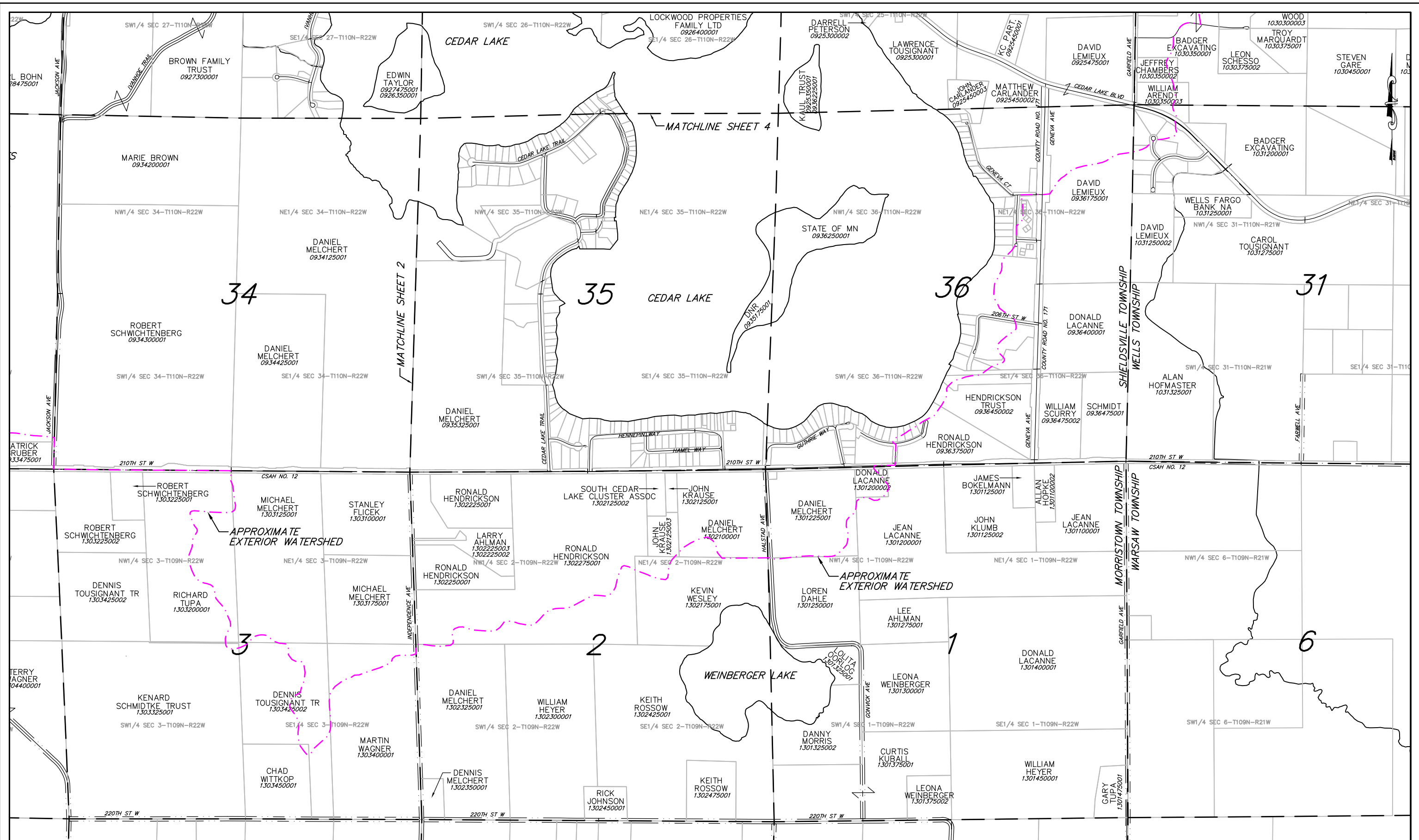
JONES, HAUGH & SMITH INC
 CONSULTING ENGINEERS & LAND SURVEYORS
 PH. 507-373-4876
 515 SOUTH WASHINGTON AVENUE
 ALBERT LEA, MINNESOTA 56007

DESIGNED: SJP
 DRAWN: SJP
 CHECKED: SJP
 DATE: 4-16-12
 FILE NO: 10-379.DWG

I hereby certify that this plan, specification, or report was
 prepared by me or under my direct supervision and that I
 am a duly Licensed Professional Engineer under the laws
 of the State of Minnesota.
Steven J. Penkava
 Steven J. Penkava
 Lic. No. 43895 Date: 4-16-12

RICE COUNTY, MN
COUNTY DITCH NO. 4
WATERSHED MAP
 REDETERMINATION OF BENEFITS & DAMAGES
 SHIELDSVILLE, MORRISTOWN & WELLS TOWNSHIPS

SHEET
 4
 OF
 5



COPYRIGHT
 by JONES, HAUGH & SMITH INC.
 This drawing and format are protected by
 Copyright and all rights are reserved. The use
 of this drawing and format is strictly prohibited
 without the written consent and permission of
 Jones, Haugh & Smith Inc.

No responsibility is accepted for the locations of
 utilities shown hereon. Verification of actual locations
 should be requested prior to the commencement of
 construction or the taking of any other action relying
 on the actual locations.
 GOPHER STATE ONE-CALL: 1-800-252-1166

REV.	BY	DATE

JONES, HAUGH & SMITH INC
 CONSULTING ENGINEERS & LAND SURVEYORS
 PH. 507-373-4876
 515 SOUTH WASHINGTON AVENUE
 ALBERT LEA, MINNESOTA 56007

DESIGNED: SJP
 DRAWN: SJP
 CHECKED: SJP
 DATE: 4-16-12
 FILE NO: 10-379.DWG

I hereby certify that this plan, specification, or report was
 prepared by me or under my direct supervision and that I
 am a duly Licensed Professional Engineer under the laws
 of the State of Minnesota.
Steven J. Penkava
 Steven J. Penkava
 Lic. No. 43895 Date: 4-16-12

RICE COUNTY, MN
COUNTY DITCH NO. 4
WATERSHED MAP
 REDETERMINATION OF BENEFITS & DAMAGES
 SHIELDSVILLE, MORRISTOWN & WARSAW TOWNSHIPS

SHEET
 5
 OF
 5