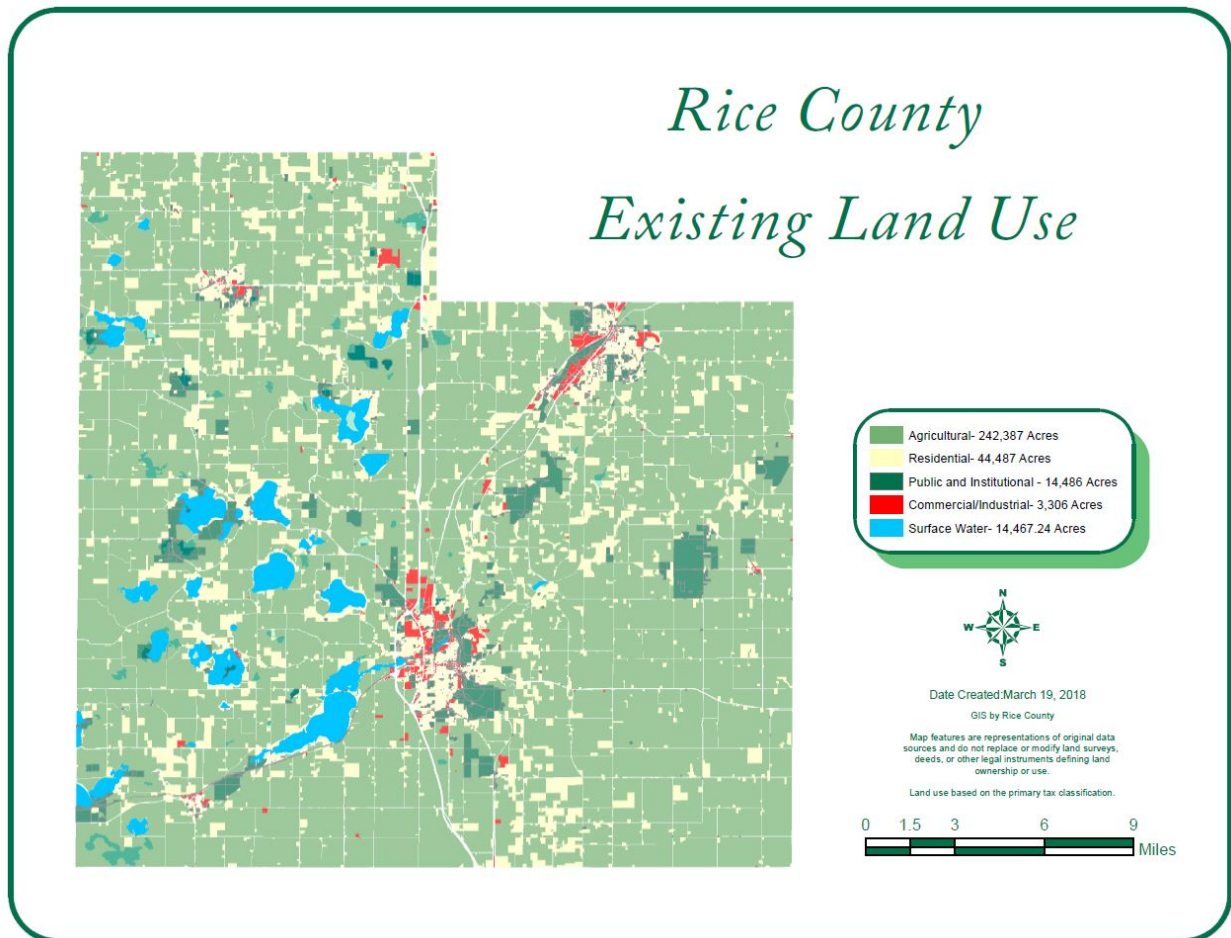




# Land Use

## Existing Land Use Map

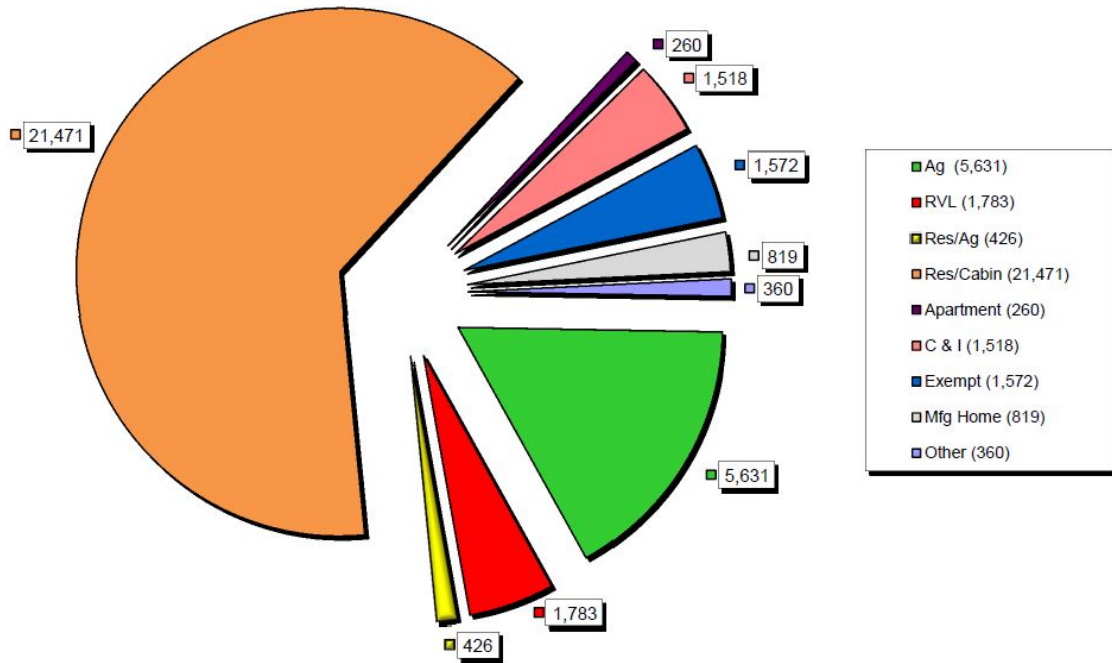


The map above shows how land parcels are classified according to the most recent information from the Rice County Assessor's Office. The predominant use of land in Rice County is Agricultural with close to a quarter million acres classified for agricultural use. The next most predominant use of land is classified as residential with over 40,000 acres. An interactive GIS map with property parcel level detail for this same map can be viewed at:

<http://arcg.is/1W8D91k>

According to a 2017 parcel classification report from the Assessor's Office, there were a total of 33,840 tax parcels in both cities and townships for Rice County. These are further broken down by use classifications for each jurisdiction in the county. The chart below, unlike the map on page one, depicts only existing land use acreage counted by parcel according to use.

2017 Parcel Classification Count 33,840



The full report from the Rice County Assessor's Office may be viewed at:

<http://www.co.rice.mn.us/documentcenter/view/40>