



Community Facilities and Resources

Education

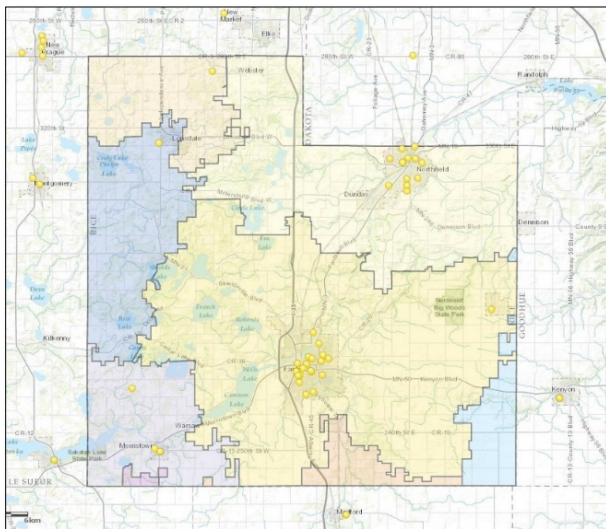
There are roughly 10,900 students in Rice County, representing 32 primary and secondary schools. In addition, the county is home to approximately 5,900 college students at one technical/community college and two liberal arts institutions.

Eight school districts serve the education needs of Rice County residents from kindergarten through twelfth grade.

Of the primary and secondary schools, enrollment into public facilities is approximately 92% of the total above. Some of the private schools in the county include the Minnesota State Academy for the Blind, the Minnesota State Academy for the Deaf, Shattuck-St. Mary's, Bethlehem Academy, Arcadia Charter School and an assortment of other Christian-based schools. Click on this map for a detailed look at the eight different public school districts and area educational facilities:

Rice County Colleges	Enrollment
St. Olaf College	3,046
Carleton College	2,014
South Central College	900*

*Estimate provided by South Central College Admissions Office



Other Public Facilities

Other public and semi-public facilities in Rice County include libraries, parks, fire service, ambulance service, emergency rescue service, post office, utilities, phone lines, various FUNDEMENTAL churches, community organizations, and cemeteries. See links below for information on various other facilities in the county:

[Buckham Memorial Library](#)

[Northfield Public Library](#)

[Lonsdale Public Library](#)

[Minnesota Braille & Talking Book Library](#)