

## Survey Results

In July 2016, Rice County launched a survey to gather information for the 2040 Comprehensive Plan Update.

Over 1,300 county residents and landowners responded to the survey, which sought input on key environmental, land use, business development and transportation issues facing the county.

Generally, survey respondents strongly favored preserving existing agricultural land, local food production, and maintaining Rice County's rural character and small town feel. Full results soon will be posted on the Rice County website.

Our thanks to everyone who took time to respond to this survey – the results will help guide the development of the 2040 Comprehensive Plan.

# INSIDE

2 Highway Updates

3 Rice County Fair

4 Recycling Reminders

5 County Profile

6 Rice County Standing Meetings

How to Contact Your Rice County Officials

[www.co.rice.mn.us](http://www.co.rice.mn.us)

- Dundas • Faribault
- Lonsdale • Morristown
- Nerstrand • Northfield
- Warsaw • Webster

## Countless Changes, Advances Highlight Career of Retiring Auditor/Treasurer

Numbers play a major role in the life of Fran Windschitl, Rice County auditor and treasurer. Numbers like: 6/3/1991 and 9/30/2017.

The first is the date that Windschitl began working for the county – and the second is the day he'll retire. During his 26 years of service, there have been countless changes, many of which he's helped initiate and implement. Major ones include the implementation in 2009 of a new property tax system. More visible ones center on elections and office automation.

Windschitl graduated from St. John University, where he majored in accounting and minored in computer science. He is also an active Certified Public Accountant (CPA). He came to Rice County after working as an auditor for the State of Minnesota and as financial manager for Stearns County. He was hired initially as Rice County's financial manager, a position which involves managing the general ledger, preparing the financial statements and providing recommendations to the county administrator on fiscal policy, budget development and accounting systems/processes.

Following the retirement of Lorraine Nelson in 1998, Windschitl was elected as auditor/treasurer, defeating two other can-

didates. In succeeding elections he has run unopposed. In this role he is responsible for helping to shape and administer a county budget that in 2017 totals \$61.5 million.

Duties of the auditor/treasurer's office include calculating rates and sending out "Truth in Taxation" notices and tax statements. His department also keeps records of all taxing district levies (towns, cities, schools, etc.), monitors tax increment finance compliance; and places delinquent property tax parcels into judgment and administers forfeiture proceedings and sales.

Windschitl also manages Rice County's portfolio, which ranges in value from \$35 million to \$80 million. Balances fluctuate due to the collection and settlement of property taxes to the various taxing authorities.

Windschitl is a strong advocate of counties playing an active role in managing these assets. Looking at the investment earnings of Minnesota's 20 largest cities and counties by population, he found that counties earned an approximate rate of return of 1.09% while cities earned 1.44% over the last five years.

*Windschitl, continued on page 2*

## Public Health – Services That Support Healthy Living

The mission of Rice County Public Health is to protect, promote and improve the health of individuals and families in the community.

To accomplish this mission, it takes a staff of approximately 50 nurses, dieticians, social workers, health educators, family health paraprofessionals, home health aides and office support, along with a management team of supervisors Sara Coulter, Susan Prieve, Kim Viskocil and Diane Winkels, and Rice County Public Health Director Deb Purfeerst. Dr. Donald Lum, an emergency room physician at Northfield Hospital, serves as the medical health consultant.

Meeting people where they are at is integral to the work of public health. In 2016,

over 23,000 home visits were made throughout Rice County in the provision of services.

### Responsibilities and Services

Rice County Public Health functions under the authority of the Rice County Community Health Board (Rice County Board of Commissioners). The Local Public Health Act in 2003 legislated six areas of responsibility for local health departments:

- Assure an adequate local public health infrastructure
- Promote healthy communities and healthy behavior

*Services, continued on page 5*

## What's New?

### Highway Updates

Summer officially has just begun, but the Rice County Highway Department has had a very busy year. Much work already has been completed, due to very good early construction season weather. As always, the public's patience and understanding is much appreciated throughout these traffic disruptions and detours.

- Asphalt paving projects are mostly complete, with one final roadway still scheduled. Approximately 16 miles of roadways will see major rehabilitation under this year's \$4.8 million worth of work.
- Our contractor has completed over 50 culvert replacements throughout the county.
- A key bridge replacement on CSAH 21 south of Faribault is rapidly nearing completion. The approach grading of the roadway will be completed and the bridge is scheduled to be opened by press time.
- Work on Richland and Warsaw township bridge replacements is planned for later this summer.

### Sales Tax for Transportation

Four new signs were purchased to identify road projects that are funded by local sales tax. These signs will be reused and moved to future projects. Signs are currently located on CR 75, leading to the County Landfill, and CR 71, west of Faribault and north of Morristown. These two projects were completely funded by sales tax funds. Other roads contained a mix of funding streams, including some sales tax. The total sales tax expended on all projects in 2017 is estimated to be \$2,330,000.

## Windschitl: By The Numbers

continued from page 1

"If half the selected counties and cities earning less than the average could earn just .5% more, this would equate to \$16.68 million more in earnings," he noted, earnings that could be used to maintain or improve county/city services or reduce property tax levies. The five-year weighted return on Rice County's portfolio has been 2.60%, ranking it highest performing among the entities analyzed. Windschitl has provided numerous investment training sessions to other counties and cities to share best practices.

### Helping Rice County Citizens Vote

Another important number in Windschitl's life is 35,915.

That's the number of people who were registered to vote in the county on November 8, 2016. As the county's chief election official, it is Windschitl's job to make sure that eligible voters are able to do so efficiently and with the assurance that their votes will be tabulated accurately.

Here, as in other aspects of his work, he gives great credit to his staff, city and township clerks, and election judges who all together make our election processes in Rice County successful. His office provides election training to over 300 participants biannually.

Windschitl has been a strong advocate for election equipment funding and testified before the state legislature this year, urging it to budget funds to replace voting equipment that is aging and increasingly becoming less reliable.

### Passing the Torch

Windschitl is proud of his career and the work he's done to make government more efficient and more transparent in Rice County and elsewhere. He's been very active in state professional groups dedicated to developing best practices and training programs in his field.

Some of the organizations in which he has held past leadership roles include Minnesota Association of County Officers, Minnesota Association of County Auditors, Treasurers and Finance Officers, Minnesota Inter-County Association Fiscal Officers, Minnesota Counties Computer Cooperative, Minnesota Government Finance Officers Association, and the Association of Minnesota Counties.

He also sits on the MAGIC Fund Board and is a past chair. This Joint Powers Board made up of many Minnesota counties oversees a money market-like fund used for county



deposits. The balances maintained in this investment pool has fluctuated between \$300 million and \$1 billion statewide.

### Next Steps

So, what's next? Rice County is beginning the process of finding someone to succeed him. Due to recent legislation, the County Board is looking at the option of appointing a successor and will hold public hearings to discuss this matter.

As for Windschitl, he is looking forward to spending more time with his family, including wife Julie, his children, two grandchildren, and his mother. He enjoys travel and is an active biker, hiker, canoeist, kayaker, and cross-country skier who enjoys making use of the natural resources of the county, including the Cannon River, the Carleton Arboretum, and the River Bend Nature Center. He's also been a runner – he has 10 marathons to his credit and over 50 half-marathons.

When asked at the end of the interview if there was anything he'd like to add, Windschitl offered another number, a relatively small but significant one: 4. That's the number of years it has been since he was successfully treated for bladder cancer. "It changes your outlook," he noted. "I try to see the good in the world now instead of being cynical."

"I am *not* counting the days to retirement the way some do," he added. "I enjoy what I do and have been privileged to work with a great staff, excellent colleagues, remarkable administrators and county commissioners, and inspirational professionals throughout the state who believe as I do that the work we do is more than a job. I've been very fortunate to help shape a better quality of life for our citizens."







## 2017 Rice County Fair – Entertainment Highlights

### Grandstand

- Wed., July 19 Mega Jump Pro Dirt Jam – 6:30 p.m.
- Thurs., July 20 Enduro Auto Races – 6 p.m.
- Fri., July 21 Barnes PRCA Rodeo – 7 p.m.
- Sat., July 22 NTPA Truck & Tractor Pull – 7 p.m.
- Sun., July 23 Kids' Power Wheels – 4 p.m.  
Demolition Derby – 4:30 p.m.



### Beer Garden Entertainment (Live Music: 8 p.m.–midnight; no cover charge)

- Thurs., July 20 Mitch Goudy & Diana Upton-Hill
- Fri., July 21 Devon Worley Band
- Sat., July 22 Mister Peabody

### Cannon Stage (Free Entertainment)

- Wed., July 19 Electric Fusion – Noon, 6 p.m. and 9 p.m.  
Brodini Family Comedy/Magic Show – 4 p.m. and 7 p.m.  
Tuey the Juggler – 5:30 p.m. and 8 p.m.
- Thurs., July 20 Electric Fusion – 10 a.m., 3 p.m., 7 p.m. and 9 p.m.  
Tuey the Juggler – 2 p.m., 6 p.m. and 8 p.m.
- Fri., July 21 Electric Fusion – Noon, 5:30 p.m. and 8 p.m.  
Kids Open Mike – 12:30 p.m.  
Tuey the Juggler – 1:30 p.m., 3 p.m. and 7 p.m.  
Brodini Family Comedy/Magic Show – 4 p.m. and 6 p.m.
- Sat., July 22 Electric Fusion – 11 a.m.  
Tuey the Juggler – 1 p.m. and 8 p.m.  
Brodini Family Comedy/Magic Show – 3 p.m. and 6 p.m.  
Karaoke Contest – 4–6 p.m.
- Sun., July 23 Electric Fusion – Noon  
Open Mike – Electric Fusion – 1 p.m.  
Brodini Family Comedy/Magic Show – 3 p.m.

### Sellner Stage (Free Entertainment)

- Tues., July 18 Boogieland Entertainment – 6 p.m.  
Rice County Fair Queen Coronation – 7 p.m.
- Wed., July 19 O'Conner's Celtic Tunesters – 1–3 p.m.  
Lyndon Peterson – 4–5 p.m.  
Jolly P's – 6:30 p.m.
- Thurs., July 20 Lyndon Peterson – 9:30 a.m. and 2–5 p.m.  
Senior Volunteer Program – 1 p.m.  
Senior Essay Winners – 1:30 p.m.  
Whitesidewalls – 7–10 p.m.
- Fri., July 21 Czech Singers – 1 p.m.  
Domaci Dancers – 2 p.m.  
Czech Concertina Club – 3–5 p.m.  
Brad Boice – Elvis Tribute – 7–9 p.m.
- Sat., July 22 Zackaryz Band – 2–5 p.m.  
La Raza de Mexico – 8 p.m.–Midnight
- Sun., July 23 Amateur Talent Contest with Larry Jindra Boogieland Entertainment Sound System – Noon  
4-H Fashion Review – 3 p.m.  
4-H Talent Show – 4 p.m.

### Ride Specials & Schedule

Wed., July 19 – Open at 3 p.m.

Arm Bands – \$25 per person  
(unlimited rides 3 p.m.–closing)

Thurs., July 20 – Open at Noon

Arm Bands – \$25 per person  
(unlimited rides 1 p.m.–closing)

Fri., July 21 – Open at Noon – Kids Day

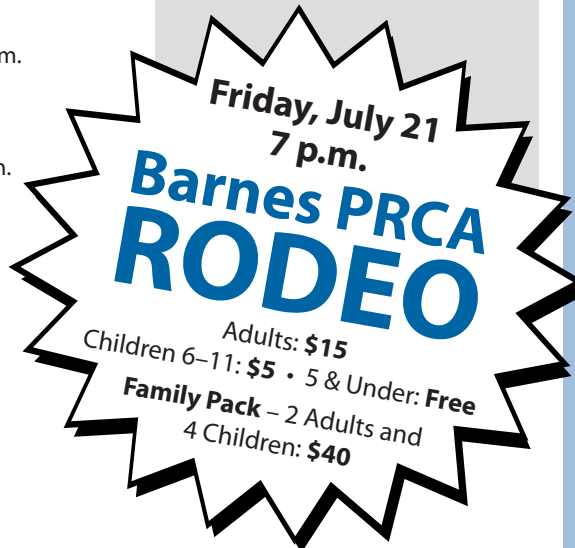
Arm Bands – \$20 per person  
(unlimited rides Noon–5 p.m.)

Sat., July 22 – Open at Noon

Arm Bands – \$25 per person  
(unlimited rides 3 p.m.–closing)

Sun., July 23 – Open at 1 p.m.

Arm Bands – \$25 per person  
(unlimited rides 1–9 p.m.)



## Attend the 2017 Rice County Fair

It's time for the Rice County Fair – some of the most exciting days of the summer! Every year, members of the Fair Board work hard to bring different events and exhibits to the fair.

Admission to the Rice County Fair is free. Parking on the grounds costs \$5 per day or the full fair for \$20.

You will be able to see more than 100 commercial exhibits, lots of animals and exciting entertainment all week long. This list is a preview of just some of the great entertainment on tap this year. Be sure to visit our website and check the full schedule published just prior to the fair.

**Please remember: Pets, skateboards, bikes, inline skates or roller skates are NOT allowed on the fairgrounds.** (There are exceptions for service animals and pets allowed for exhibition, demonstration or show.) Please help ensure the safety of all our visitors. Enjoy the 2017 Rice County Fair!

### Smoking Policy

The Rice County Fairgrounds are now smoke free except for the designated areas. (The exhibit buildings, barns and children's ride areas were always smoke free; we are extending it further.) **This includes regular cigarettes and e-cigs.**

There will be designated areas for tobacco use on the grounds. These areas are noted in the premium book.

## Did You Know?

### Super Bowl Legacy Grant Awarded

In February 2017, Rice County was awarded a grant from the Minnesota Super Bowl Host Committee Legacy Fund.

The \$49,918 grant was designated for renovations to a damaged playground at the Cannon River Mobile Home Park in Faribault. Construction on the playground was completed in June. This grant helped rebuild the playground area and helps ensure a safe space for families and children to gather together and be physically active within their neighborhood.

The playground rebuild project was a concerted effort by several local organizations, including Cannon River Mobile Park management, Rice County Public Health, Faribault Public Schools, Rice County Statewide Health Improvement Partnership, and Growing Up Healthy, a local coalition that addresses social factors influencing immigrant and refugee families.

“Community partners and residents had already started working together to improve health opportunities and resources for the neighborhood,” said Deb Purfeerst, Rice County Public Health Director and CHS Administrator. “The park’s renovation helped to advance those efforts, by giving these children access to playground equipment and physical activity opportunities that youth in other communities routinely enjoy.”

This grant was part of the 52 Weeks of Giving campaign, a year-long effort to make Super Bowl LII a statewide event by awarding 52 communities with grants that will improve the health and wellness of young people in Minnesota. The Minnesota Super Bowl Host Committee is a private, non-profit corporation formed to plan and execute Super Bowl LII. For information, visit [www.mnsuperbowl.com](http://www.mnsuperbowl.com)


## Single-Sort Residential Recycling

In August 2008, Rice County switched to single-sort recycling for all residents. Are you still recycling your materials correctly? Below is a reminder about the common items you can – and cannot – place into your recycling bin.

**Remember:** Place recyclables loose in the container. Do not put them into bags.


For more information about recycling, electronic waste, or hazardous waste, visit [www.co.rice.mn.us/220/Recycling-Center](http://www.co.rice.mn.us/220/Recycling-Center)

| Recycling  | NOT Recycling   |
|--|---|
| Glass bottles & jars (colored glass is OK)   | Food waste  |
| Metal beverage and food cans   | Paper plates, cups, napkins, pizza boxes              |
| Plastics #1–7  | Meat or dairy plastic/paper packaging                 |
| Newspapers, including glossy ads   | Styrofoam packaging, containers, trays                |
| Magazines  | Packaging film, waxed paper, plastic wrap             |
| Copy paper, letterhead, junk mail  | Freezer food packaging                                |
| Envelopes (with or without windows)  | Diapers   |
| Cardboard food boxes (cereal, pasta, detergent, etc.)  | Leather shoes, belts, purses, carpet                  |
| Cardboard boxes (flattened)  | Household batteries (OK to put in the garbage)        |
| Phone books  | Commercial appliances                                 |
| Beverage cartons – milk, juice, broth, cream, wine (aseptic packaging) – <b>rinsed &amp; dried</b> | Window glass, mirrors, lightbulbs, ceramics, dishware |



**Tell the Driver:**

**TEXTING  
+ DRIVING  
= ILLEGAL**



Brought to you by all Rice County Law Enforcement and the Rice County Safe Roads Coalition.

### TAKE ACTION TO STOP DISTRACTION

- Set mirrors and music before driving.
- Don't eat or drink while driving.
- Know trip directions in advance. Set GPS before you leave, or pull over.
- Drive well rested. If you feel tired, find a safe place to rest.



**It is illegal for drivers under the age of 18 to use a cell phone while driving – for ANY reason.**

Turn off cell phones and put phones out of reach. Have passengers handle calls if necessary.

Distracted driving contributes to 1 in 4 car crashes in Minnesota. Parents – lead by example.

Adopt a “hands off the cell phone while driving” policy for your whole family and pay attention to driving.

### MINNESOTA'S “NO TEXTING WHILE DRIVING” LAW

It is illegal for **ALL** drivers to read/compose/send text messages and emails, or access the web using a wireless device while the vehicle is in motion or a part of traffic – including when stopped in traffic or at a traffic light.

**Violations are \$50 plus court fees for a first offense;  
\$275 plus court fees for a second or subsequent offense.**

# Services That Support Healthy Living

continued from page 1

- Prevent the spread of infectious disease
- Protect against environmental health hazards
- Prepare for and respond to disasters and assist communities in recovery
- Assure the quality and accessibility of health services

The department's mission and areas of responsibility are accomplished through a variety of services and work within four program areas: Clinic and Community; Family Child Health; Home Care; and Long Term Care.

**Clinic and Community** work includes regular community health assessment and community health improvement planning, public health emergency preparedness, community health education, disease prevention and control activities, and community work focused on improved population health through policy, systems and environmental change. Clinic services include WIC (Women, Infants and Children – a supplemental food and nutrition education program serving income-eligible women and children up to age 5), immunization services primarily for those who are uninsured, underinsured or without a regular source of health care, walk-in STD testing, Mantoux testing and TB medication management, in addition to information and referral services.

**Family Child Health** includes family home visiting by registered nurses and paraprofessionals for health education and support. Additional services include a computerized developmental tracking program, "Follow Along," for children up to age 3, car seat edu-

cation, a young parenting newsletter series (in English and Spanish) for families with children under the age of 3, numerous support groups in a variety of languages for families with infants, child and teen checkups outreach, and reproductive health services for primarily uninsured men and women. Program activities are directed toward promoting the health and well-being of pregnant and parenting families, enhancing parent/child interaction, promoting healthy child growth and development, promoting effective child spacing, preventing unintentional injury and abuse, and improving health care access, self-sufficiency and positive parenting.

**Home Care and Long Term Care** – the department also offers a wide variety of services to support healthy, safe living for the adult disabled and elderly population. Licensed as a Medicare-certified, comprehensive home care agency, Rice County Public Health provides registered nurse, home health aide, and therapy services to county residents. In addition, care coordination, case management support, and long term care assessments are available by staff in the public health long term care unit. These services are designed to support elderly persons in their efforts to remain living as independently as possible in the community.

### Contact Us

For more information or questions about any of these services, contact Rice County Public Health at 507-332-6111, or visit the website at [www.co.rice.mn.us/256/Public-Health](http://www.co.rice.mn.us/256/Public-Health) or Facebook at [www.facebook.com/RiceCountyPublicHealth](http://www.facebook.com/RiceCountyPublicHealth).

# County Profile



## Deb Purfeerst Public Health

Deb Purfeerst has served as the Rice County Public Health Director/Community Health Services Administrator since 2012. She began working for Rice County in 1984 as a home care nurse, and became the Family Child Health nursing supervisor in 1990.

"As director, I am responsible for overseeing the Public Health Department, including a staff of 50 employees and a \$3.9 million budget," Purfeerst says. "I am proud of our dedicated public health employees, who are committed to improving the health and well-being of people in our community."

Purfeerst "loves the challenge of public health and working with a wide variety of community organizations and people. Every day brings new experiences and opportunities."

Born and raised in rural Faribault, Purfeerst graduated from Faribault High School and the University of Wisconsin, Eau Claire. Her very first job was herding dairy cows for milking and helping make hay. Now, in her spare time, she is also involved in her family's corn/soybean farming operation, with her husband, Jim.

Purfeerst feels fortunate to live and work in Rice County, and is grateful that their children, Misty, Mark and Matt, and grandchildren, Leo, Ivy and Stella, live nearby. In her free time, she enjoys being outdoors, flower gardening, helping with the beef cattle, spending time with her grandkids, and motorcycling with Jim.

## Visit us at the 2017 Rice County Fair!

Visit this year's Rice County Fair, where these departments will be on hand.

- **Environmental Services**
- **The Sheriff's Office** will be present in their Mobile Incident Command bus. Staff will be available to answer any ques-

tions, and provide public safety and first aid to those in need at the fair.

- **Rice County Public Health** will set up a lactation station area at the fair, where all breastfeeding moms can have a place to relax, cool down and breastfeed.

**CLEAN.  
DRAIN.  
DRY.**



**STOP**  
**AQUATIC HITCHHIKERS!**

ALL BOATS, TRAILERS & EQUIPMENT EVERY TIME



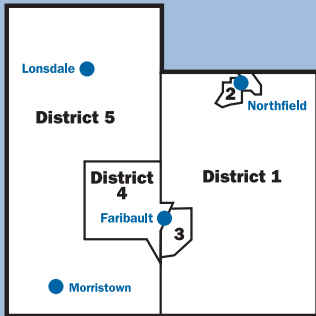


# Rice County Report

Rice County Government Services Building  
320 Third Street NW  
Faribault, MN 55021

PRST STD  
U.S. POSTAGE  
PAID  
FARIBAULT, MN  
PERMIT NO. 21

## Contacts



### Rice County Board of Commissioners (as of January 1, 2017)

**District 1**  
Jake Gillen  
507-334-5746  
jgillen@co.rice.mn.us

**District 2**  
Galen Malecha  
507-645-6041  
gmalecha@co.rice.mn.us

**District 3**  
David Miller  
507-334-4763  
dmiller@co.rice.mn.us

**District 4**  
Steve Bauer  
507-334-9700  
sbauer@co.rice.mn.us

**District 5**  
Jeff Docken  
952-652-2876  
jdocken@co.rice.mn.us

## Phone Numbers

General Information 507-332-6100  
**Toll-Free Numbers** (do not dial "1" or area code)  
From Northfield 645-9576  
From Lonsdale 744-5185

## Rice County Standing Meetings

### Board of Commissioners

Meets the first and third Tuesdays of each month as a Committee of the Whole/Work Session, 8:30 a.m., Commissioners' Room, Rice County Government Services Building.

Meets the second and fourth Tuesdays of each month as a Regular Board, 8:30 a.m., Commissioners' Room, Rice County Government Services Building.

### Board of Adjustment

Meets the first Thursday of the month; 7:00 p.m., Commissioners' Room, Rice County Government Services Building.

### Planning Commission

Meets the first Thursday of the month, immediately following the Board of Adjustment meeting, Commissioners' Room, Rice County Government Services Building.

### Community Corrections Advisory Board

Meets the third Thursday of March, June, September and December, 3:30 p.m., Rice County Government Services Building.

### Community Health Services Citizens' Advisory Committee

Meets the fourth Wednesday every other month (January, March, May, July, September, November), 6:30-8:00 p.m.; call 507-332-6111 for location.

### Rice County Emergency Preparedness Advisory Council

Meets quarterly, 7:00-9:00 p.m.; call 507-332-6119 for meeting date and location.

### Mental Health Advisory Council

Meets the fourth Wednesday of the month, 12:00 p.m. (noon), Friendship House, located at 212-B Central Avenue, Faribault.

## Rice County Departments

**Administrator** Sara Folsted  
507-332-6121 sfolsted@co.rice.mn.us

**Assessor** Paul Knutson  
507-332-6102 pknutson@co.rice.mn.us

**Attorney** John Fossum  
507-332-6103 jfossum@co.rice.mn.us

**Auditor/Treasurer** Fran Windschitl  
507-332-6104 fwindschitl@co.rice.mn.us

**Community Corrections Director** Christine Curtis  
507-332-6106 ccurtis@co.rice.mn.us

**Court Administrator** Hans Holland  
507-332-6107 hans.holland@courts.state.mn.us

**Economic Development Coordinator** Kathy Feldbrugge  
507-332-6091 kfeldbrugge@co.rice.mn.us

**Environmental Services Director** Julie Runkel  
507-332-6113 jrunkel@co.rice.mn.us

**Extension Regional Director** LuAnn Hiniker  
507-332-6109 luannah@umn.edu

**Highway Engineer** Dennis Luebbe  
507-332-6110 dluebbe@co.rice.mn.us

**Housing Director** Joy Watson  
507-333-3787 jwatson@co.rice.mn.us

**Human Resource Manager** Carol Kritzer  
507-332-6124 ckritzer@co.rice.mn.us

**Information Technology** Shelley Langevin  
507-333-3777 slangevin@co.rice.mn.us

**Parks/Facilities Director** Jake Rysavy  
507-332-6105 jrysav@co.rice.mn.us

**Public Health & CHS Director** Deb Purfeerst  
507-332-6111 dpurfeerst@co.rice.mn.us

**Recorder** Judy VanErp  
507-332-6114 jvanerp@co.rice.mn.us

**Sheriff** Troy Dunn  
507-332-6010 tdunn@co.rice.mn.us

**Social Services Director** Mark Shaw  
507-332-6115 mshaw@co.rice.mn.us

**Veterans' Services Officer** Tracy McBroom  
507-332-6117 trmcroom@co.rice.mn.us