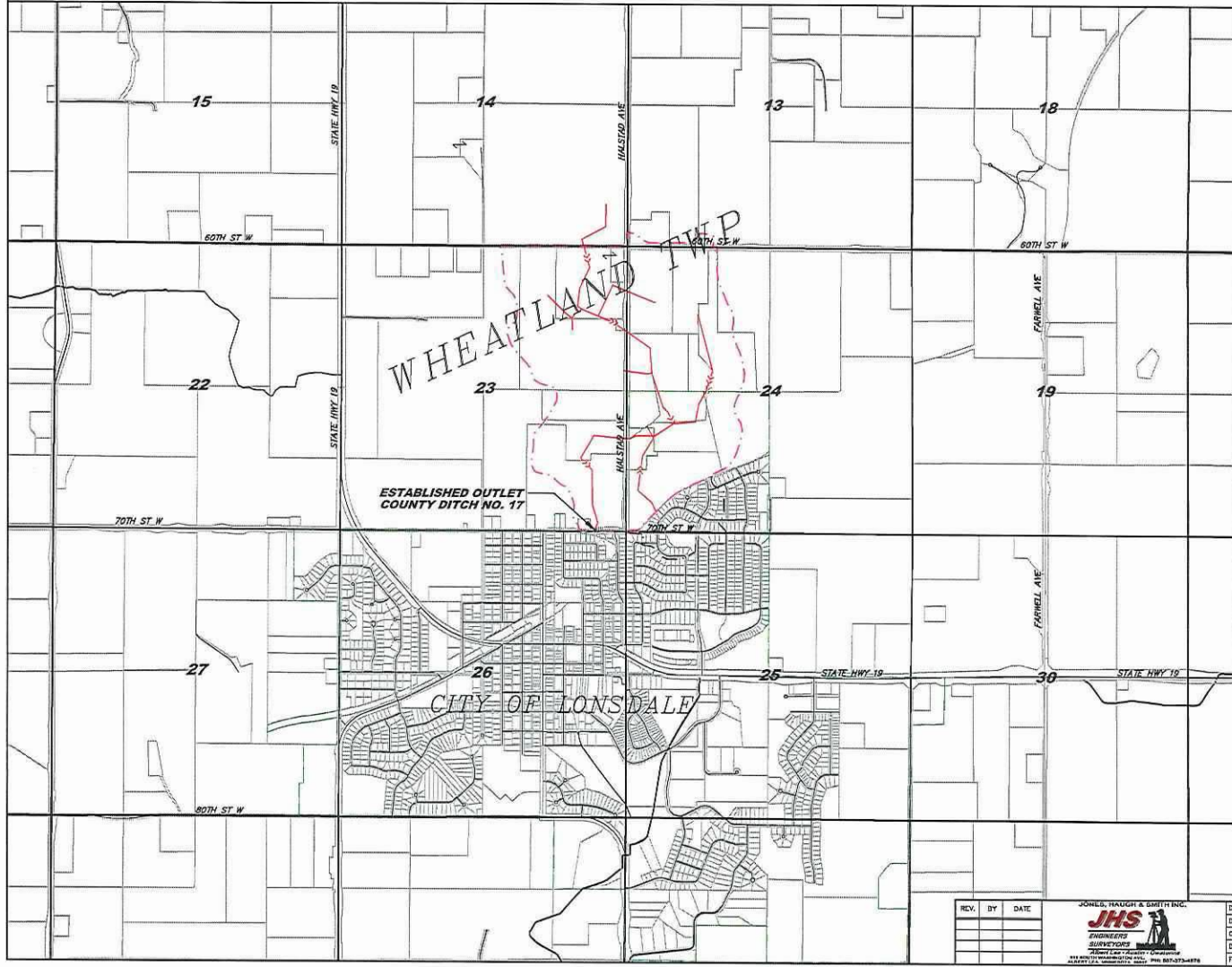


COUNTY DITCH NO. 17

REDETERMINATION OF BENEFITS & DAMAGES

RICE COUNTY, MINNESOTA



INDEX TO SHEETS

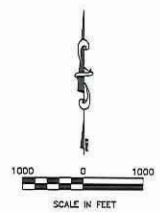
SHEET	SUBJECT
1	TITLE SHEET
2	WATERSHED MAP

LEGEND

- APPROXIMATE EXTERIOR WATERSHED
- APPROXIMATE INTERIOR WATERSHED
- APPROXIMATE ORIGINAL WATERSHED
- OPEN DITCH (Project)
- LEGAL OPEN DITCH (Not Project)
- PRIVATE OPEN DITCH
- TILE DITCH (Project)
- LEGAL TILE DITCH (Not Project)
- PRIVATE TILE
- LEGAL WATERWAY (Project)
- NATURAL STREAM
- OAK LINE
- OVERHEAD ELECTRIC
- UNDERGROUND TELEPHONE
- CITY LIMITS
- FENCE LINE
- TILE INLET
- OVERHEAD TELEPHONE
- FIBER/OPTIC
- UNDERGROUND ELECTRIC
- LIGHT POLE
- POWER POLE

ABBREVIATIONS

- JD = JOINT DITCH
- CD = COUNTY DITCH
- JCD = JOINT COUNTY DITCH
- MCD = MAIN OPEN DITCH
- LAT = LATERAL
- BR = BRANCH
- PVT = PRIVATE
- POD = PRIVATE OPEN DITCH
- LW = LOW-WATER
- CR = CROSSING
- OL = OUTLET



No responsibility is accepted for the locations of utilities shown hereon. Verification of actual locations should be requested prior to the commencement of construction or the taking of any other action relying on the actual locations.

Locations of all utilities shown are approximate.
COURTESY STATE ONE-CALL: 1-800-252-1166

The subsurface utility information in this plan is Utility Quality Level D. This Utility Quality Level was determined according to the guidelines of CI/ASCE 38-02, entitled "Standard Guidelines for the collection and depiction of existing subsurface utility data."

COPYRIGHT

by JONES, HAUGH & SMITH INC.
This drawing and format are protected by Copyright and all rights are reserved. The use of this drawing and format is strictly prohibited without the written consent and permission of Jones, Haugh & Smith Inc.

I hereby certify that this plan, specification, or report was prepared by me or under my direct supervision and that I am a duly Licensed Professional Engineer under the laws of the State of Minnesota.

Steven J. Parkova
Steven J. Parkova
Lic. No. 43895 Date: 12-15-15

EXHIBIT A

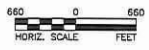
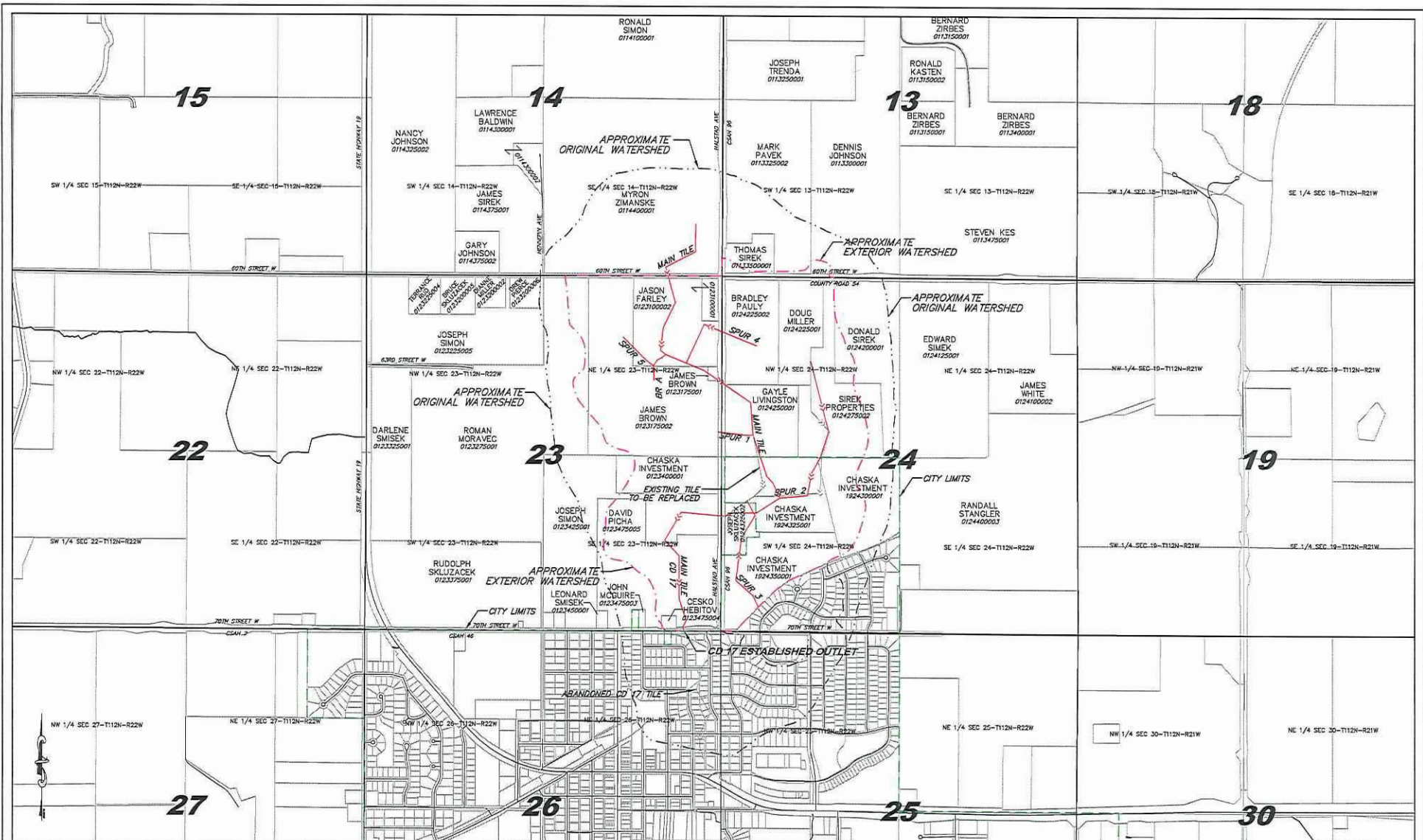
**RICE COUNTY, MINNESOTA
COUNTY DITCH NO. 17
REDETERMINATION OF BENEFITS & DAMAGES
TITLE SHEET**

SHEET
1
OF
2

REV.	BY	DATE



DESIGNED: SP
DRAWN: SP
CHECKED: SP
DATE: 12-15-15
FILE NO: 14-18320W



COPYRIGHT
 by JONES, HAUGH & SMITH INC.
 This drawing and format are protected by
 Copyright and all rights are reserved. The use
 of this drawing and format is strictly prohibited
 without the written consent and permission of
 Jones, Haugh & Smith Inc.

No responsibility is accepted for the locations of
 utilities shown hereon. Verification of actual locations
 should be requested prior to the commencement of
 construction or the taking of any other action relying
 on the actual locations.
 Gopher State One—CALL: 1-800-252-1166

REV.	BY	DATE



SECTIONED: SLP
 DRAWN: SLP
 CHECKED: SLP
 DATE: 12-15-15
 FILE NO: 14-192.049

I hereby certify that this plan, specification, or report was
 prepared by me or under my direct supervision and that
 I am a duly Licensed Professional Engineer under the laws
 of the State of Minnesota.
Steven J. Penkova
 Steven J. Penkova
 Lic. No. 4285 Date: 12-15-15

RICE COUNTY, MINNESOTA
COUNTY DITCH NO. 17
WATERSHED MAP
 REDETERMINATION OF BENEFITS & DAMAGES
 WILKLAND TOWNSHIP