

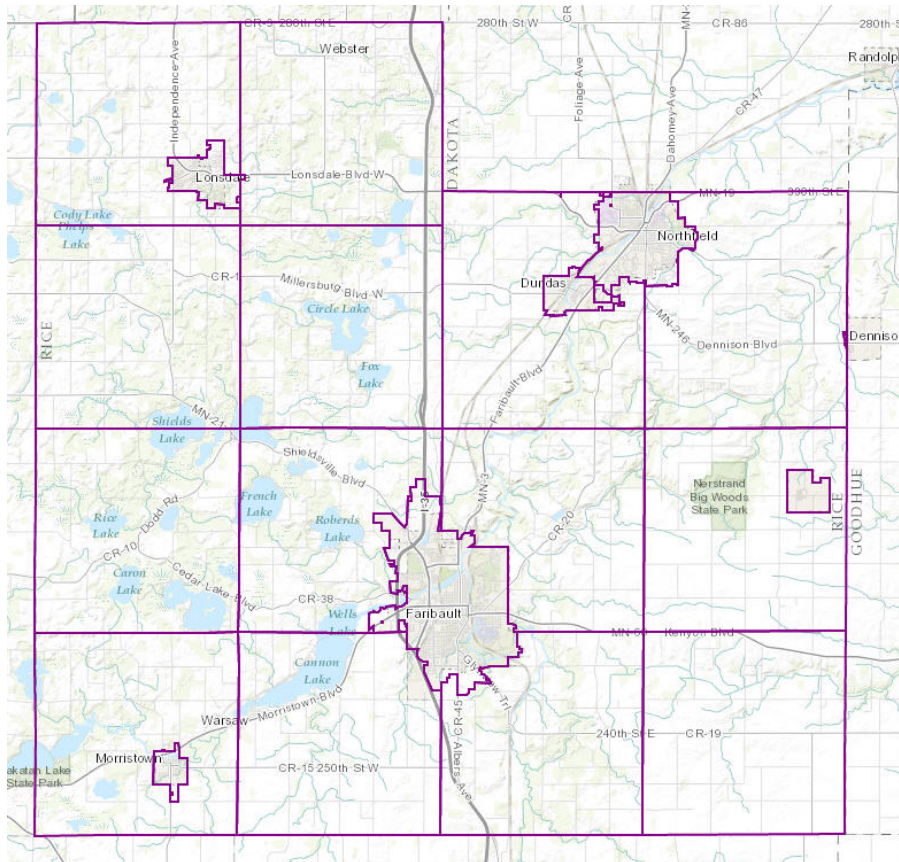


Demographics

Population

Population: All people, male and female, child and adult, living in a given geographic area.

Population trends play an important role in planning at all levels of government. Past, current and future trends must all be taken into account when considering future land use planning. Various factors influence long range population projections and care must be taken when interpreting the data.



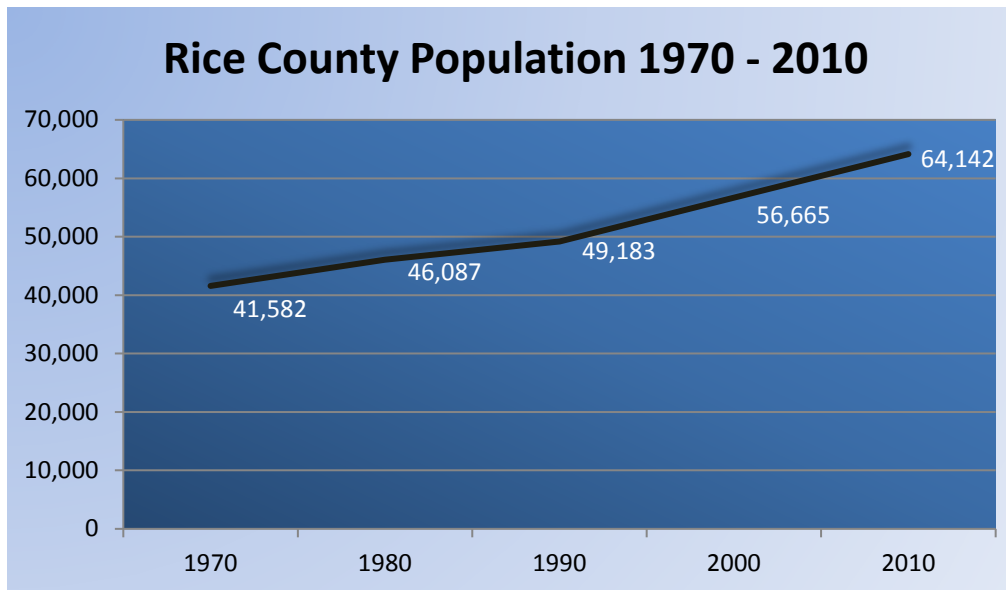
Click on the following map to access:

<http://www.arcgis.com/home/webmap/viewer.html?webmap=274bfe49a4324c55b12fe1e430660a48>

Table 1: Summary Statistics for Rice County Demographic Information 1990 - 2010

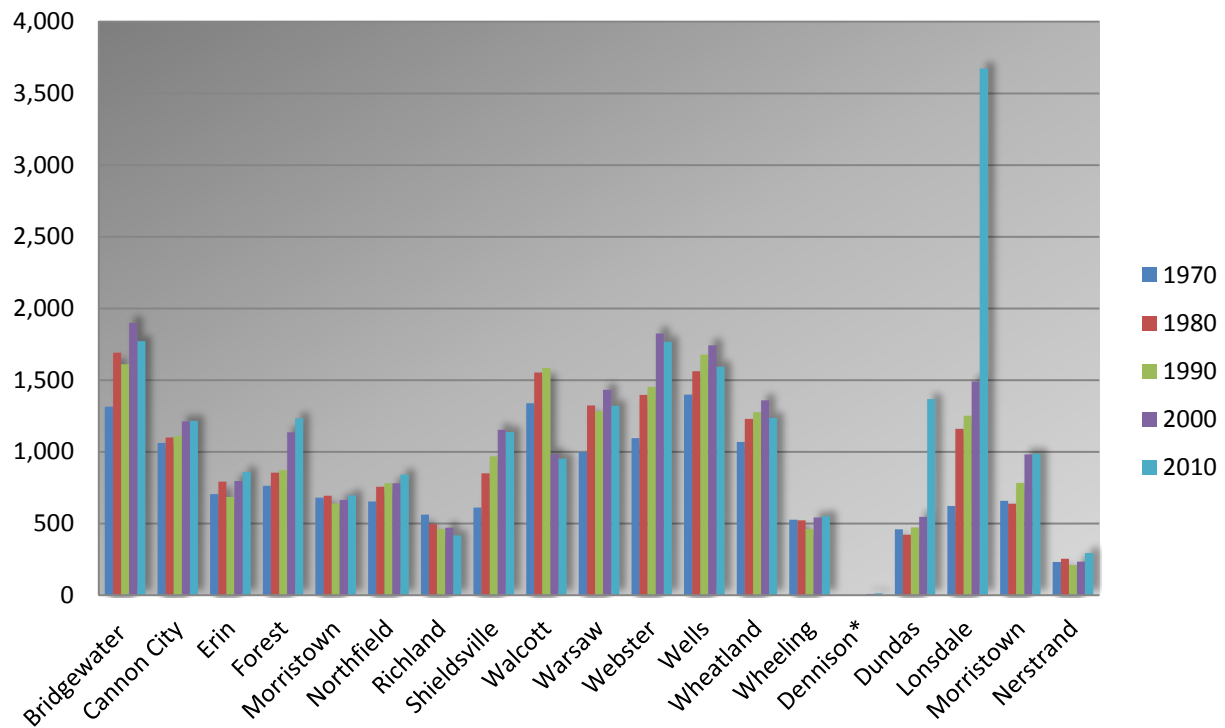
	1990	2000	2010
Population	49,183	56,665	64,142
Land Area (square miles)	497.6	497.57	495.68
Density (persons per sq. mile)	98.8	113.9	129.4
Housing Units	17,520	20,061	24,453
Households	16,347	18,888	22,315
Persons Per Household	2.66	2.65	2.55

2010 U.S. Census data shows the county has a population of 64,142; accounting for a population density of over 129 people per square mile. Population centers include 23,352 people residing in Faribault and 18,860 in Northfield (Rice County residents only). Census data demonstrates that the county has experienced a 30 percent growth between 1990 and 2010.

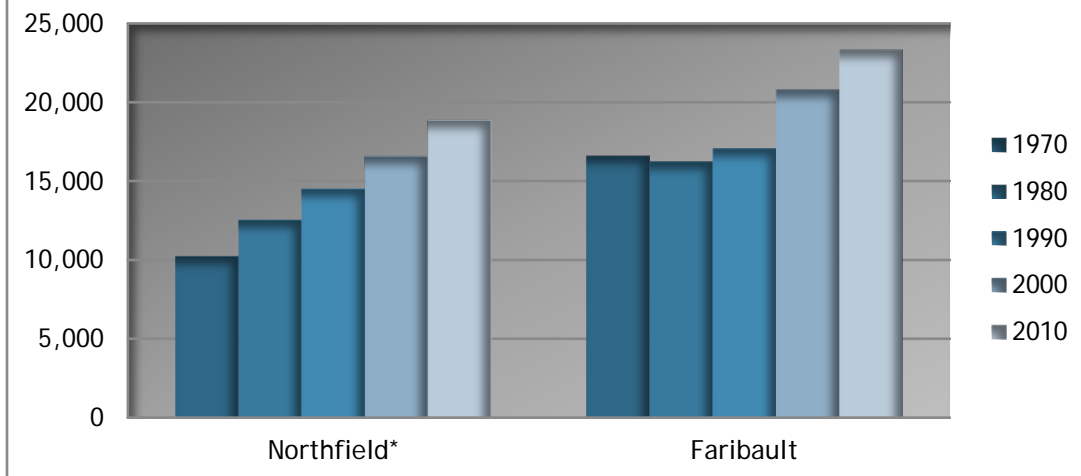


Between 1990 and 2010, the county population had increased by over 30 percent. Several townships have experienced growth within those years with Erin, Forest, Morristown and Northfield Townships showing the highest growth. Other townships have seen a sharp decline. Cities continue to show strong growth.

Rice County Population Growth for Municipalities (Under 5,000 Residents)

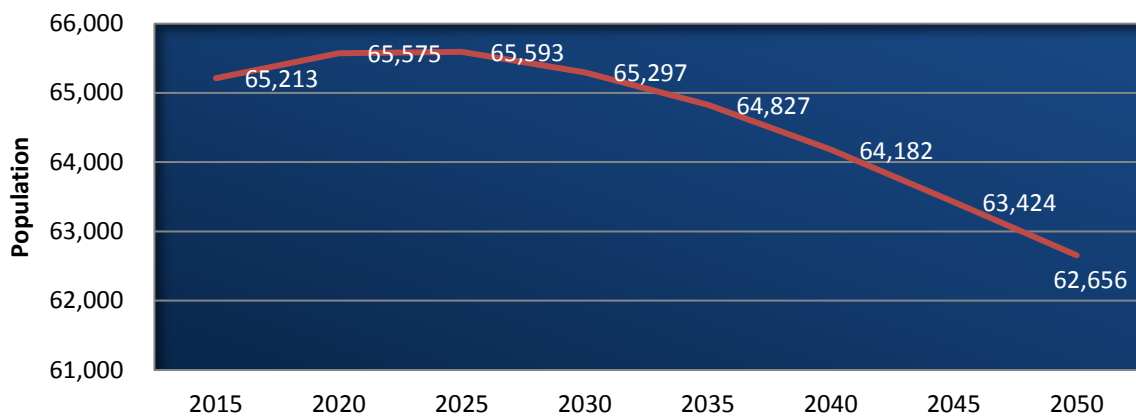


Rice County Population Growth for Municipalities (Over 5,000 Residents)

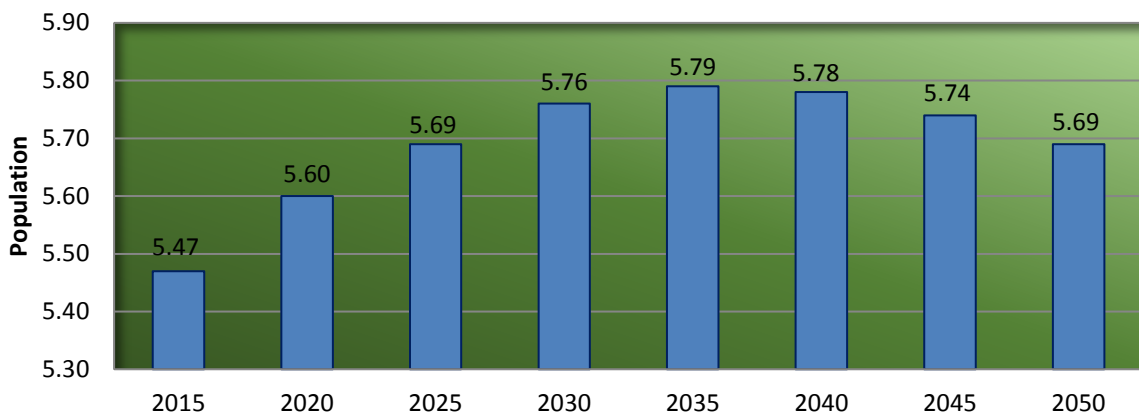


*Includes Rice County residents only

Rice County Population Projections 2015-2050



Minnesota Population Projections 2015-2050 (in Millions)



<https://mn.gov/admin/demograph>

According to models developed by the Minnesota State Demographic Center, Rice County's population is projected to be stable through 2025 then decrease by nearly 4.5% by 2050. This trend is similar to state projections, with the State population slightly increasing through 2030 then stabilizing and then very gradual declining through 2050. Much of the anticipated state growth is projected to occur in counties surrounding the Minneapolis/St. Paul metropolitan area. With few exceptions, rural counties are projected to see much slower growth, with many counties losing population over the next 30 years.

Urban - Rural

Nearly three quarters of the population in Rice County live in urban centers. From the year 2000 to 2010, the urban population had seen an increase of over twenty percent. Rural populations, however, have noticed a decrease of six percent. Less than five percent of county land is urban, pointing to a high population density in urban areas when compared to rural county lands.

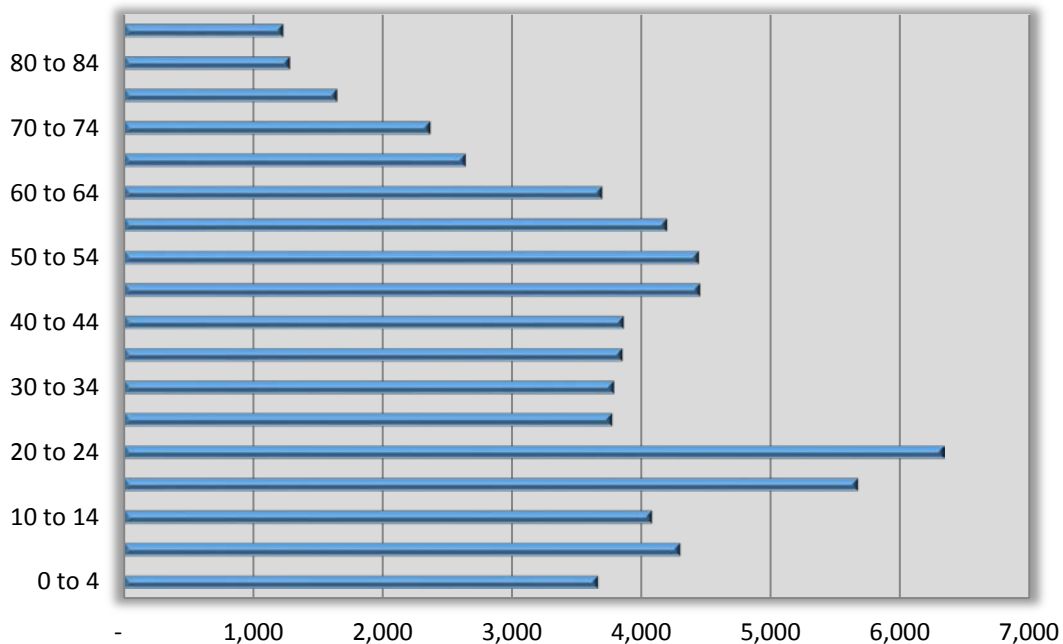
Table 2: Rice County Urban and Rural Population 2010 and Percent Change from 2000

County	Total Population	Urban	Rural	Percent Change 2000 to 2010 Urban	Percent Change 2000 to 2010 Rural
Rice	64,142	47,507	16,635	21.91	- 6.00

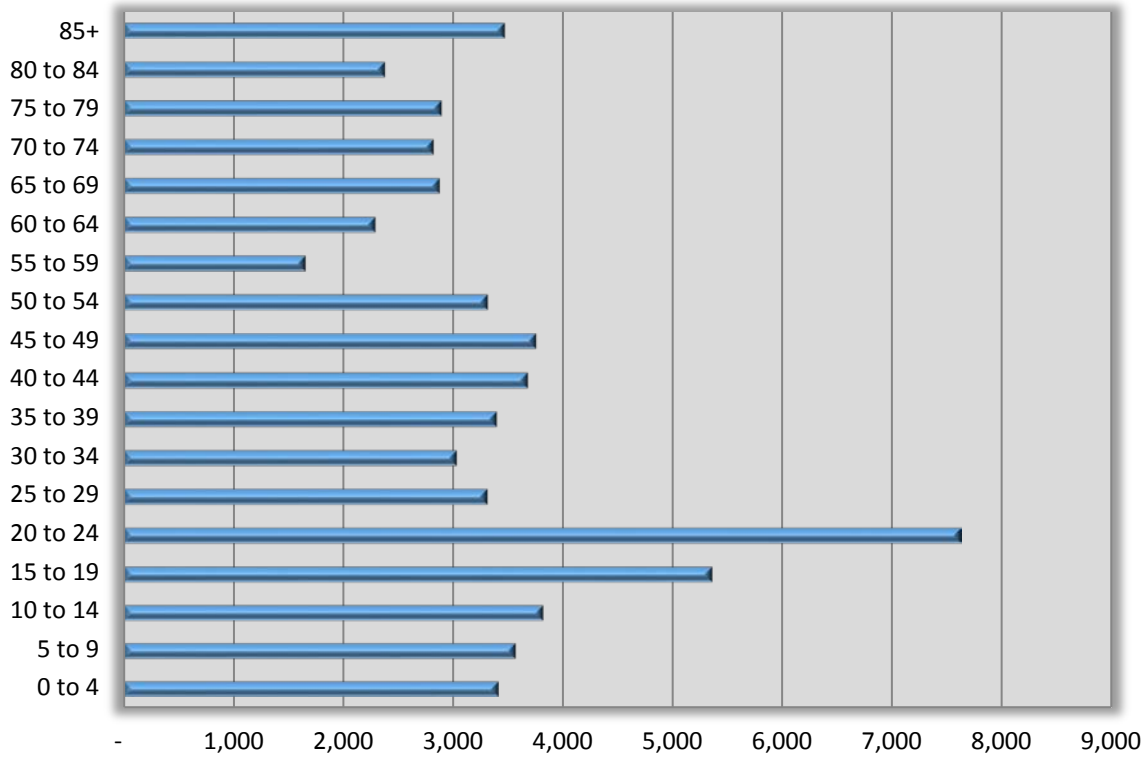
Age Characteristics

Rice County is projected to age as we continue into the twenty first century. One exception to this will be noticed in the college age group. Due to the relatively steady population of college students, this age group is expected to see minimal change when compared to the overall population. (<https://mn.gov/admin/demography/>)

Rice County Age Cohort 2016



Rice County Age Cohort 2050



*Above information can be referenced by linking to the U.S. Census Bureau American FactFinder at <http://factfinder.census.gov/faces/nav/jsf/pages/index.xhtml> unless otherwise noted.